

# Intelligent and Configurable: Meet Your Analytical Needs Today and Tomorrow

Agilent 8890 gas chromatography system





## How Much Is an Hour of Your Time Worth?

Whether you manage a lab that's large or small, contract or in-house, your challenges as a lab manager are universal. Success depends on the timeliness and accuracy of the data generated by your instruments and staff. And when everything's working smoothly, you can spend more time on tasks such as finding new customers and keeping up-to-date on methods.

### **The new Agilent 8890 GC system keeps you in control**

Why the Agilent 8890 GC? Because it works. But there's much more to the 8890 besides decades of proven Agilent reliability and performance. As the most self-aware GC available, the 8890 senses—and compensates for—atmospheric pressure fluctuations to ensure precise chromatography.

### **Intelligent GC: Instruments that work as hard as you do**

The 8890 GC is just one of a new breed of instrument that monitors system health, alerts you to potential issues, and helps you solve problems. That means you can plan your work—including maintenance—rather than react to unexpected downtime.

In addition, the instrument features core microchannel-based electronic pneumatic control (EPC) architecture. Unique to Agilent, this design protects against gas contaminants—such as particulates, water, and oils—improving reliability and longevity.

### **Check on your lab anytime, from anywhere**

Now you don't have to be in your lab to make sure that things are running smoothly. Mobile access features let you view setup information, troubleshoot problems, check for leaks, backflush columns, pause and start sample runs, and manage method development.

# Intelligent GC Simplifies Life Inside—and Outside—the Lab

## Intuitive touch screen interface

Gives you real-time access to instrument status and information.

### Home screen

Provides at-a-glance updates on the system configuration and flowpath.

### Instrument actuals screen

Allows you to customize and identify frequently used setpoints for quick accessibility.

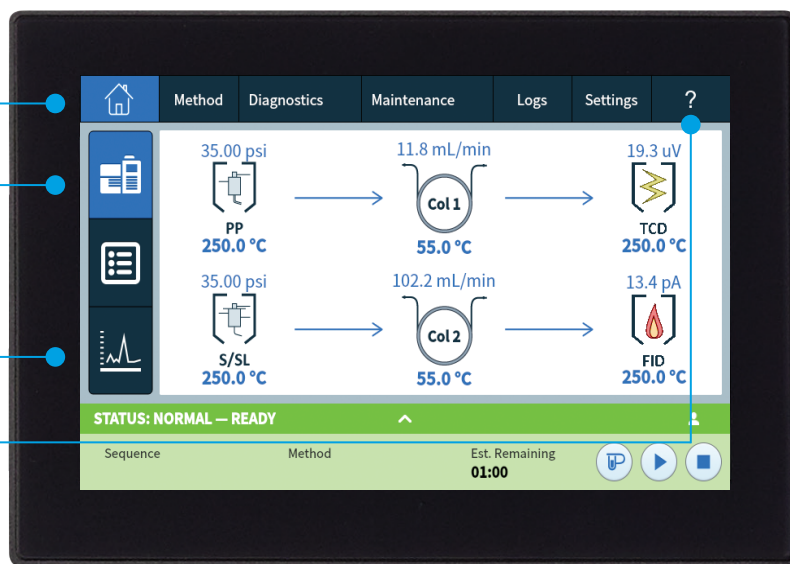
### Plot screen

Confirms that analyses are progressing as intended.

### Additional tabs

Give you quick access to key functions such as:

- Methods
- Sequences
- Diagnostics
- Maintenance
- Logs
- Settings
- Help



## Browser interface

Access most of the functions available on the GC touch screen, plus help functions, without having to stand at the instrument.

- Gain access from any browser (tablet, laptop, or PC)
- Edit GC methods and sequences without the need for a data system
- Call up Diagnostics, Maintenance, Logs, and Help menu items
- Review logs, or consult the user manual, right at your desk
- Check instrument status and run diagnostics from any place within reach of your secure lab network



# Smart Instrument Features Let You Reduce Stress, Empower Employees, and Get Home on Time

Intelligent capabilities built into the Agilent 8890 GC give you the freedom to work with your GC... not on it. These capabilities can also grow over time as your analytical needs change—so you can keep your lab moving toward a successful future.





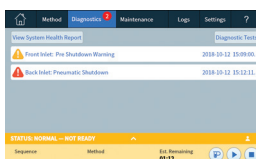
### Know that your GC is ready to run—before you begin

Initiate diagnostic tests at any time through the touch screen or browser interface.



### Keep your GC operating at its best

The 8890 GC continuously monitors setpoints and reference voltages. When issues are identified, an alert appears on both the touch screen and the browser interface.



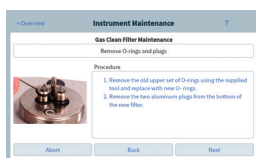
### Resolve problems quickly

Important issues, such as pressure shutdowns, have self-guided troubleshooting trees embedded in the touch screen and browser interface.



### Stop problems before they start

Enhanced maintenance feedback (EMF) counters let you monitor common consumables to maximize their lifetime.



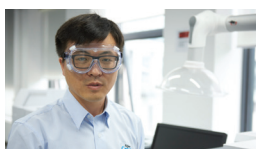
### Easily complete common maintenance procedures

Self-guided maintenance provides step-by-step instructions for replacing inlet components, columns, and GC detector consumables.



### Monitor GC performance

Automatically evaluate blanks and GC detectors using advanced onboard analytical techniques.

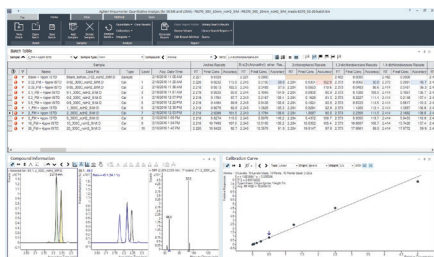


### Lower your cost of ownership

Hydrogen or nitrogen alternate carrier gas capability minimizes operating costs. The optional helium conservation module and hydrogen sensor help reduce gas use. Sleep/wake modes lower your gas and energy consumption.

# A Complete GC Workflow That Helps You Get from Where You Are to Where You Want to Be

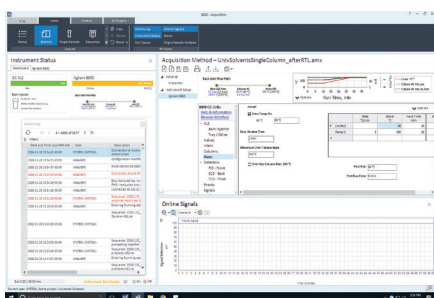
For over 50 years, Agilent has led the way with industry-changing GC and GC/MS instruments, consumables, software, and more. And every step of the way, your goals become *our* goals: Improving the user experience, laboratory operation, and business success.



## Agilent MassHunter software

### Streamline operations and boost productivity

- Enable powerful data collection, processing, and reporting
- Breeze through application-specific workflows with comprehensive GC and GC/MS support
- Use one software platform for all Agilent GC and GC/MS instruments, including single quadrupole, tandem quadrupole, and GC/Q-TOF
- Analyze complex samples—including environmental and food matrices—with compound-based analysis and reporting workflows that use MassHunter Quantitative Analysis with Quant-My-Way customization
- Simplify data analysis with powerful application-specific software, such as retention-time locked MS libraries, MRM databases, and high-resolution personal compound database and libraries



## Agilent OpenLab CDS

### Capture, analyze, and share data

- Optimize routine LC, GC, and single quadrupole MS workflows
- Quickly onboard staff with easy-to-use software for LC, GC, and single quadrupole MS instruments—including many non-Agilent instruments
- Maintain quality and reliability in pharmaceutical and chemical production with role-based access controls and comprehensive audit trails
- Process large amounts of data by visualizing data sets with Peak Explorer
- Visually highlight failed or out-of-spec samples in customizable reports
- Automate error-prone, time-consuming tasks by integrating Sample Scheduler for OpenLab with your LIMS

Both MassHunter and OpenLab CDS combine acquisition and data analysis capabilities with customizable automated calculations to ensure efficient, accurate results.



### Mass spectrometry compatibility

#### Improved confidence in detection and identification

The 8890 GC is compatible with the Agilent single quadrupole, triple quadrupole, and Q-TOF GC/MS systems



### Agilent sample preparation solutions

#### Reliably extract and concentrate samples from complex matrices

- Simplify sample preparation with prepackaged Agilent Bond Elut QuEChERS kits
- Produce cleaner extracts using Agilent Bond Elut SPE



### Agilent clean gas solutions

#### Reduce column damage and sensitivity loss

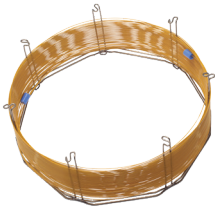
- Ensure a clean gas line with Gas Clean filters
- Sensitive indicator-triggered smart sensor alerts you when filters are saturated and need replacing



### Agilent inert flowpath

#### Reliable, consistent inertness from injector to detector

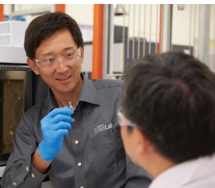
- Decrease adsorption along the flowpath for accurate, reproducible detection of trace-level analytes
- Achieve the parts-per-billion, parts-per-trillion, or lower detection levels that today's analyses demand



### Agilent J&W GC capillary columns

#### Consistent performance and reliability

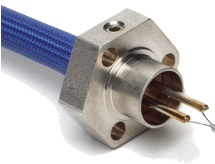
- Ultra Inert columns, with inert liners, ensure optimal signal-to noise performance
- Deliver the lowest bleed levels, highest inertness, and tightest column-to-column reproducibility
- Smart ID keys track column configuration, temperature, usage, and number of injections



### Flexible repair options

#### Get your lab back to work

- **On-demand repairs:** When an instrument needs diagnosis or repairs, our experts will get it operational again
- **Service plans:** Get your current problem fixed—and all other issues covered for one year
- **Service Center repair:** Ship to us, and we'll send a replacement—or, we'll fix and return it



### Genuine replacement parts for Agilent detectors

#### Replacement part authenticity counts

- Minimize background interference, low signal counts, and response changes
- Maintain reliable performance, consistent signal output, and maximum uptime
- Backed by the Agilent service agreement—plus a 90-day warranty from the date of shipment

## Agilent CrossLab: Real insight, real outcomes

CrossLab is an Agilent capability that integrates services, consumables, and lab-wide resource management. So your lab can improve efficiency, optimize operations, increase instrument uptime, develop user skill, and more.



Learn more:

**[www.agilent.com/chem/gc](http://www.agilent.com/chem/gc)**

GC column selection tool:

**<http://selectgc.chem.agilent.com>**

Inert flowpath:

**[www.agilent.com/en/promotions/inertflowpath](http://www.agilent.com/en/promotions/inertflowpath)**

Buy online:

**[www.agilent.com/chem/store](http://www.agilent.com/chem/store)**

Find a local Agilent customer center in your country:

**[www.agilent.com/chem/contactus](http://www.agilent.com/chem/contactus)**

USA and Canada:

1-800-227-9770

**[agilent\\_inquiries@agilent.com](mailto:agilent_inquiries@agilent.com)**

Europe:

**[info\\_agilent@agilent.com](mailto:info_agilent@agilent.com)**

Asia Pacific:

**[inquiry\\_lsca@agilent.com](mailto:inquiry_lsca@agilent.com)**

This information is subject to change without notice.

© Agilent Technologies, Inc. 2018  
Published in the USA, December 7, 2018  
5994-0476EN

